

5. Assemble FOSC housing

- 5.1 Put the FOSC cover on the FOSC bottom directly.
- 5.2 Insert four pieces of locating bolt of FOSC and tighten it with the special wrench, then the rest eight pieces of fixing bolts.
- 5.3 After finishing the above operation, tighten the plastic nut.

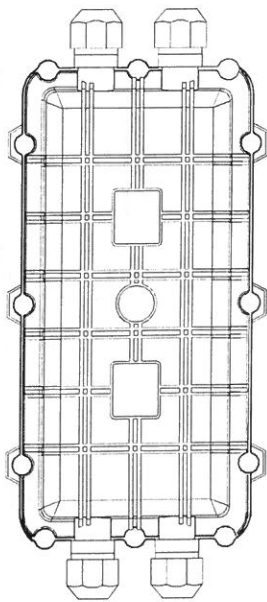


Figure 5

6. The installation and fixed of FOSC

- 6.1 If the FOSC is for aerial application, then put the hanging hook on one side of the closure **and then** tighten fixing bolts on both sides. Otherwise tighten the four fixing bolts **on four corners** respectively. See drawing 6
- 6.2 wall mounting installation, use of hanging wall accessories. See drawing 7

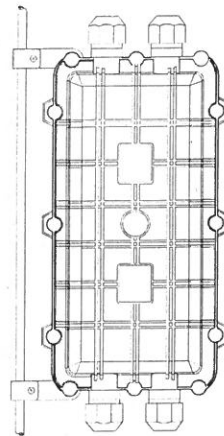


Figure 6

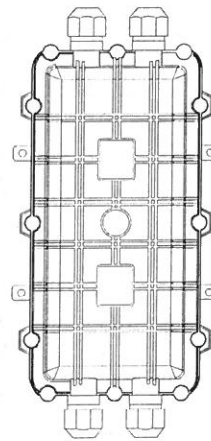


Figure 7

Horizontal Fiber Optic Splice Closure

KE902

Installation Manual

1. Scope of application

This Installation Manual is suit for the Fiber Optic Splice Closure (Hereafter abbreviated as FOSC), as the guidance of proper installation. The scope of application is: aerial, underground, pipeline, handhole. The ambient temperature ranges from -40 to 65 °C.

2. Applicable temperature

- -1~+45°C (Temperature for operation)
- -50~+70°C (Temperature for storage and transportation)
- -40~+65°C (The ambient temperature ranges)

3. Stripping fiber cable

when branch cable stripping, should put the length of the fiber optic cable skin peeled off as about 1200 mm, Reserve reinforced core in 40 mm length and cut off the unnecessary ones. See figure 1



Figure 1

4. fixing fiber cable.

4.1 Fixed cable and reinforced core according to the picture below. See figure 2

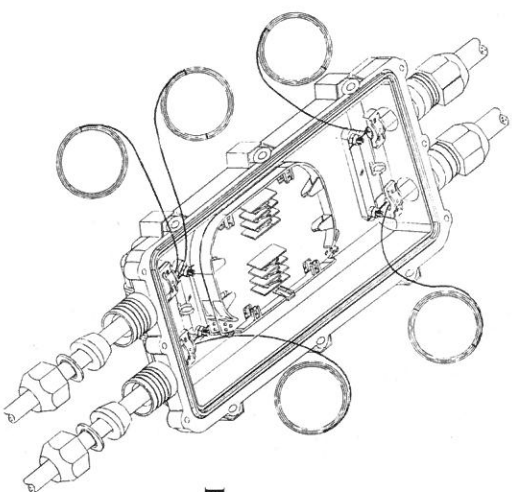


Figure 2

4.2 Splice fibers, install heat shrinkable protective sleeve

See figure 3 follow user manual of fusion splicing machine to splice fiber cores. When having completed splicing the fibers, the first fiber ring should be housed on the farthest side of FOST, the remaining fiber should be wound, forming a ring with diameter not less than 80mm. then put it into FOST (Fiber Optic Splice Tray) together with heat shrinkable sleeve for splice protection.

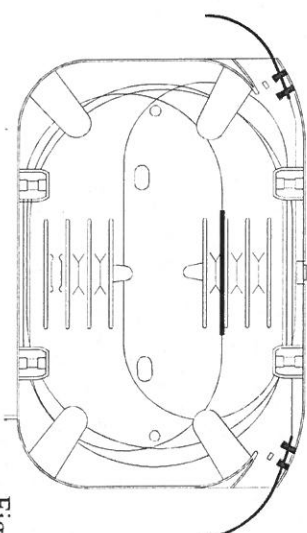


Figure 3

4.3 Check up comprehensively

To ensure the technical requirements, the following instructions must be followed:

- The fibers in the FOST are spliced and installed orderly.
 - The curved diameter of fiber meets with the technical requirements.
 - The internal tighteners are tightened.
 - The inlet/outlet ports without fiber cables must be blocked up with the port plugs.
 - Seal the cover of seal fitting.
- See figure 4

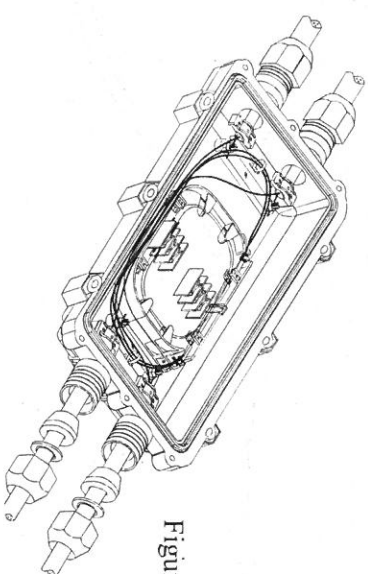


Figure 4